

**SAINTLOUISBALLET**  
218 THF Blvd  
Chesterfield, MO 63005  
636-537-1998  
info@stlouisballet.org



**REGISTER  
ONLINE TODAY!**  
STLOUISBALLET.ORG

**SUMMER DANCE PROGRAM  
AT LINDENWOOD UNIVERSITY**

**Intermediate and Advanced Program:** June 27–July 22  
**Beginner Program:** June 27–July 15  
**Ballerina Princess Camp:** July 11–15

**VISIT [STLOUISBALLET.ORG](http://STLOUISBALLET.ORG)  
FOR MORE INFORMATION.  
REGISTRATION BEGINS FEBRUARY 1ST.**

NON-PROFIT ORG  
U.S. POSTAGE  
**PAID**  
CHESTERFIELD, MO  
PERMIT NO. 66

# SAINTLOUISBALLET

## SUMMER DANCE PROGRAM AT LINDENWOOD UNIVERSITY

**Intermediate and Advanced:** June 27–July 22

**Beginner Program:** June 27–July 15

**Ballerina Princess Camp:** July 11–15

### Classes Offered:

- ballet • pointe • jazz • modern
- ballroom • ballet conditioning
- musical theater • contemporary
- variations • in-studio performances

- ✓ Nationally renowned faculty
- ✓ Large dance studios
- ✓ Housing available

**REGISTRATION BEGINS FEBRUARY 1st!**



Front: SLB Student Emma Hackman, Back: SLB Student Anne Oberman, Photos by Pratt Kreidich



# SUMMER INTENSIVE PROGRAM 2016

VISIT [STLOUISBALLET.ORG](http://STLOUISBALLET.ORG) TO REGISTER TODAY!



## LEVELS

**Level III:** Ages 13-21 (Equal to SLB Levels 6-8, pointe work at least 2 yrs)

**Level II:** Ages 10-13 (Equal to SLB Levels 4-6, prepointe or beginner pointe)

**Level I:** Ages 7-9 (Equal to SLB Levels 2-3)

## DATES OF PROGRAMS AND DAILY SCHEDULE

**Level III:** 4 Weeks\*, Monday - Friday, June 27-July 22

**Level II:** 4 Weeks\*, Monday - Friday, June 27-July 22

**Level I:** 3 Weeks\*, Monday - Friday, June 27-July 15

\*Students can choose to take one, two, three, or the entire program recommended.

## LOCATIONS

### Level I:

Saint Louis Ballet School,  
218 THF Blvd, Chesterfield, MO 63005

### Levels II and III:

Lindenwood University, Scheidegger Center for the Arts  
2300 West Clay St., St. Charles, MO 63301

## DAILY SCHEDULE

**Level III:** Mon-Fri; 20 classes/week, ballet technique daily; 10am-3:30pm

**Level II:** Mon-Fri; 20 classes/week w/ ballet technique daily; 10am-3:30pm

**Level I:** Mon-Fri; 10 classes/week w/ ballet daily; 10am-1pm

\*In-studio performance for Intermediate and Advanced Levels weekly for parents and family.

## CLASSES TAUGHT

**Levels II and III:** Ballet, Pointe/PrePointe, Variations, Modern, Ballet Conditioning, Musical Theater, Ballroom, Jazz, Contemporary

**Level I:** Ballet, Jazz, Musical Theater, Variations

## TUITION

**Levels II and III:** \$285/per week + \$20 Reg Fee

**Level I:** \$185/per week + \$20 Reg Fee

A non-refundable deposit of \$50 due upon registration.

## HOUSING

Housing is available through a trusted Saint Louis Ballet host family. Fee for Host Family Program \$400 per week. Please contact the office to coordinate.

## HOW TO REGISTER:

Request a registration form by mail.

Download a registration form online.

Register online at [stlouisballet.org](http://stlouisballet.org).

A non-refundable deposit of \$50 is required. Balances due no later than June 1, 2016.

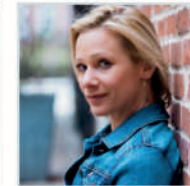
All fees are non-refundable once paid in full.

**REGISTRATION ONLINE BEGINS FEBRUARY 1<sup>ST</sup>**

## FACULTY



GEN HORIUCHI  
Artistic Director  
and former  
New York City Ballet  
Principal Dancer



ANGELA BROOKS  
Dancing with St. Louis  
Stars Professional  
Dancer and Program  
Manager of St. Louis  
Dancing Classrooms



CHRISTINE  
KNOBLAUCH-O'NEAL,  
Formerly with  
American Ballet Theater;  
Professor in Dance at  
Washington University



BRYAN LIND  
Physical Therapist,  
Certified Athletic  
Trainer



KATIE MCGOWAN  
Musical Theater  
Graduate  
Lindenwood University



JANET STRZELEC  
Associate Professor,  
Dance Department Chair  
Lindenwood University



LISA WOLFSBERGER  
SLB Alum and Year  
Round Faculty



STEPHANIE HOGAN  
SLB Year Round Faculty



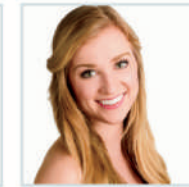
LAUREN CHRISTENSEN  
SLB Dancer and Year  
Round Faculty



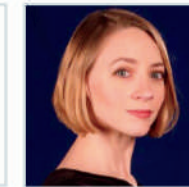
ERICKA GOSS  
SLB Dancer and Year  
Round Faculty



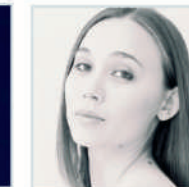
AMY  
HERCHENROETHER  
SLB Dancer



MAKENSIE HOWE  
SLB Dancer and Year  
Round Faculty



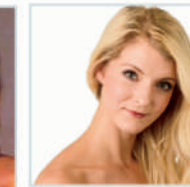
CICI HOUSTON  
Former SLB Dancer and  
Year Round Faculty



MARIKO  
KUMANOMIDO  
SLB Year Round Faculty  
Modern/Contemporary



ANDREA PAXTON  
SLB Year Round Faculty  
Jazz/Contemporary



LORI WILSON  
SLB Dancer and  
Year Round Faculty

MORE INFORMATION ON FACULTY AND GUESTS AT [STLOUISBALLET.ORG](http://STLOUISBALLET.ORG).

## BALLERINA PRINCESS CAMPS

### Saint Louis Ballet's Official Ballerina Camps for Ages 3-4 and Ages 5-6

#### ABOUT THE CAMPS

Specifically designed for the young ballerina at heart, this camp is age appropriate yet introduces them to the basics of ballet steps by experienced instructors with years of experience in the professional world. It also brings out your child's joy of dancing and acting as well as involving crafts using pointe shoes worn by real ballerinas from the Saint Louis Ballet Company. A performance is given at the end of the week for parents to view and enjoy what the students have learned.

- ◆ Learn Ballet Class Basics and Creative Movement
- ◆ Create a Princess Wand
- ◆ Learn Stories of Great Ballets like *Cinderella*, *Sleeping Beauty*, *Swan Lake* and the popular story and music of *Frozen*!
- ◆ Decorate a Princess Pointe Shoe (worn by a professional ballerina from Saint Louis Ballet)
- ◆ Have fun with Music
- ◆ Be Inspired by Ballet Videos
- ◆ Create and Perform a Dance

#### DATES AND TIMES

July 11-15, Ages 3-4  
9:00am - 11:30am, Monday-Friday  
(Must be of age before May 1, 2016)

July 11-15, Ages 5-6  
1:00pm - 3:30pm, Monday-Friday  
(Must be of age before May 1, 2015)

#### TUITION

\$160 for the week  
\$25 Registration & Material Fee

**Space is limited.**

REGISTER ONLINE STARTING FEB. 1<sup>ST</sup> AT [STLOUISBALLET.ORG](http://STLOUISBALLET.ORG)

